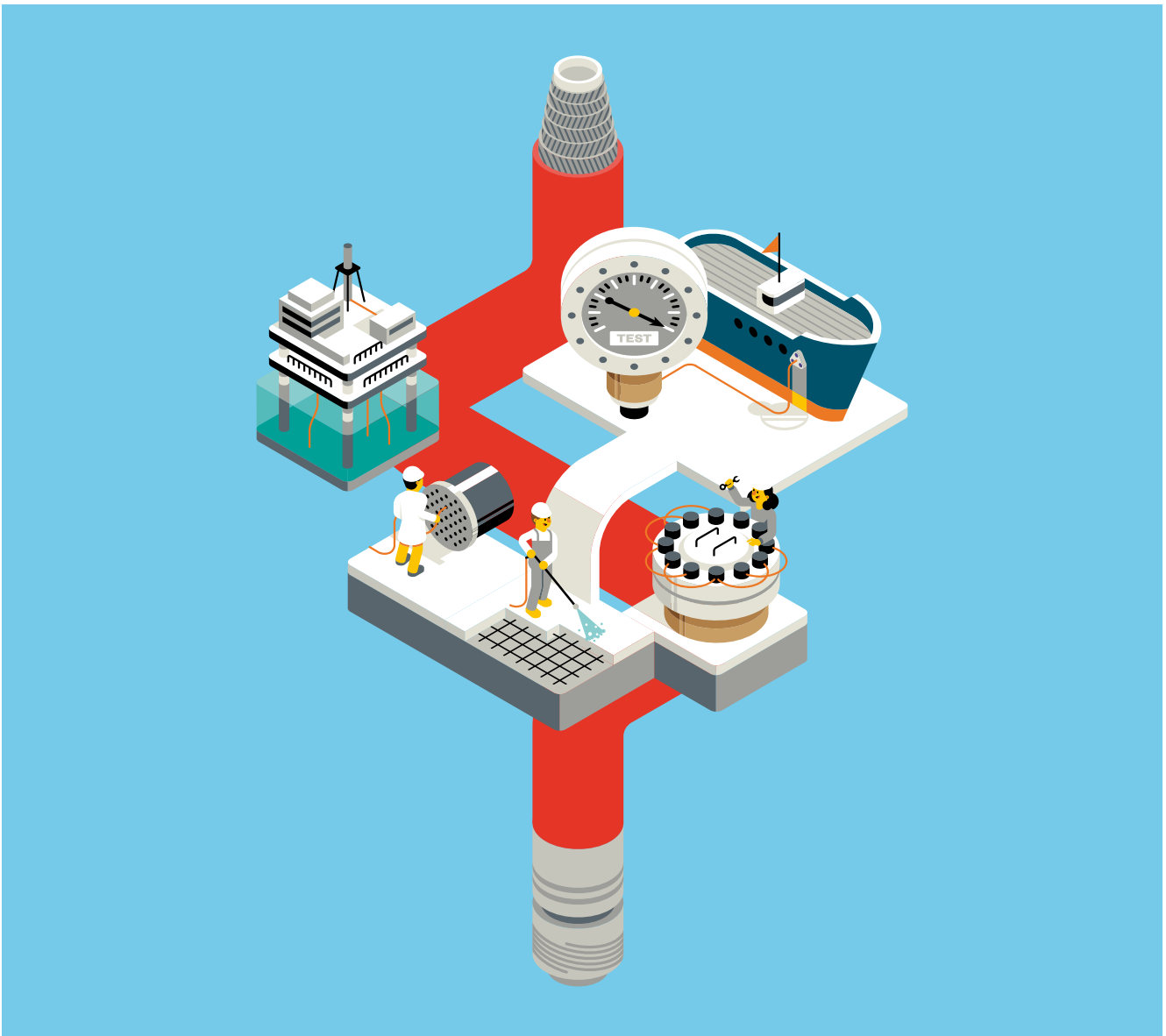


# Quick Reference Guide

# TO UHP

**HELIX ULTRA HIGH PRESSURE**  
THERMOPLASTIC HOSES & FITTINGS



**TRANSFER OIL**  
Pure Fluid Attitude

# Key List TO Ultra High Pressure

## APPLICATIONS



### Oil & Gas and Off-shore

Hose-bundles, chemical injection, control of subsea hydraulic components, subsea well control, gaseous media, methanol service. Long lengths available.



### Bolt-tensioning

Bolt tensioning systems and torque wrenching both for topside and subsea applications.



### Pressure test equipment

Such as valves, tooling and control panels, control of service equipment.



### Waterblast

Applications for pressures up to 4000 bar (58,000 psi). Ultra high-pressure waterjet cutting and hydro demolition such as cutting and demolition of armoured concrete, pipelines, paper or steel. Industrial cleaning services requiring Ultra High Pressures: tank and vessel cleaning, surface preparation, surface cleaning of buildings, paint removal.



### Heat exchanger

And tube cleaning where small bore routing is required.

## COLOUR CODING

The globally recognized WJTA-IMCA association has recently issued a colour coding scheme recommendation aimed at hose manufacturers and assemblers. The purpose of this recommendation is to help ensure on-the-job

safety by making different hoses more easily identifiable on sight.

The colour coding scheme appears in the Recommended Practices for the Use of High Pressure Waterjetting Equipment.



10,000 psi — 690 bar



15,000 psi — 1034 bar



20,000 psi — 1379 bar



30,000 psi — 2068 bar



40,000 psi — 2758 bar



55,000 psi — 3792 bar

## Certification

### ISO 9001:2008

One of the first companies in our industry to achieve certification of its Quality Management System in accordance with the internationally recognised standard ISO 9001.

### ISO 14001:2004

Environmental Management System in accordance with environmental standard ISO 14001. A very significant and voluntary step that Transfer Oil decided to undertake.

This commitment, respect and protection of the environment is a guarantee of added value to services and products that Transfer Oil SpA proudly offers and exports all over the world.

### BS OHSAS 18001:2007

Occupational Health and Safety Management System in accordance with the British Standard OHSAS 18001. International practices to manage organically and systematically all issues concerning safety and health in the workplace to ensure compliance with current legislation.



# Hose Assembly

## CUSTOMIZED HOSE ASSEMBLIES

When it comes to hose assemblies Transfer Oil provides the best UHP hose, fittings and accessories combination to satisfy market demand on tough applications like waterblast, heat exchanger tube cleaning, hydrodemolition equipment, hydraulic bolting, off-shore, paint removal, ship cleaning, surface preparation, removal of rubber streaks from airport runways and many more.

Hose assemblies have been Transfer Oil focus since entering

the ultra high pressure market, and we endeavour to deliver top performing factory made assemblies always. We thoroughly test their strength and reliability with multiple quality checks before, during, and after assembly. Not one single component passes through our facility without being 100% inspected and tested to ensure that each assembly conforms to the operating conditions and meets our customer highest expectations.

## HOSE SELECTION CRITERIA

To guide our customers through the ordering process of a hose assembly, we have featured below a typical hose assembly made up of all possible components that can be used on a single length of hose.

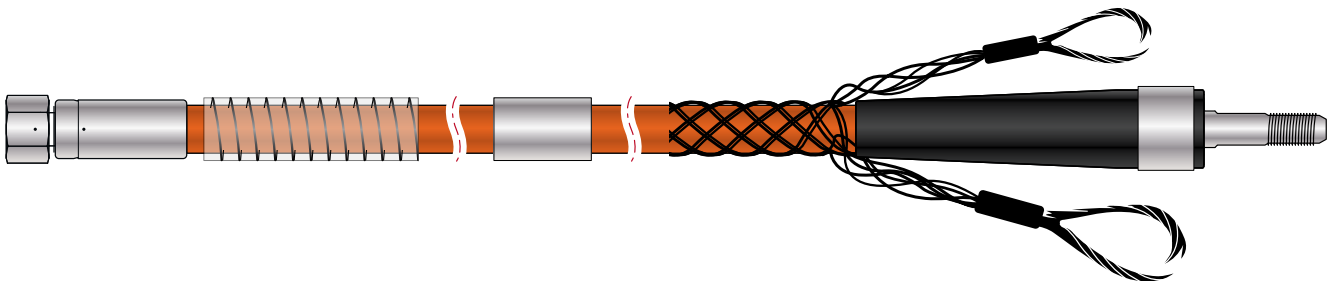
Hose selection must be made taking into consideration the **SIZE** of internal and external diameter and the length of the required assembly.

Once the hose **SIZE** (ID x OD) and length is identified, make sure you have the working conditions right. Maximum **PRESSURE** of the system and any surge, must also be taken into account when selecting hose and fittings. **TEMPERATURE** (ambient and the maximum temperature of the material being conveyed). **APPLICATION** is also an important aspect when

selecting a hose assembly. Application includes features like external conditions: abrasion, climate, heat, flexing, crushing, kinking, and degrees of bending)

Knowing what **MEDIA** is being conveyed, what kind of substance is it and chemical compatibility with the hose inner core and outer cover, will help in selecting the correct hose and fittings combination.

An assembly is not an assembly if the **END** fittings have not been selected. Knowing which fittings to mount is very important, and not necessarily be the same on both ends. The **DELIVERY** is the final step that takes into account all the testing, quality check, packaging, and shipping requirements.



### Protection jacket

A cristal clear PVC protection jacket or Extra tough cover with internal spiral for rough and harsh environment. Hose protection jacket is not a hose burst shield, and cannot be intended as protection for the operator from bursts, leaks or high pressure fluid injections.



### Stainless steel catch ring

When using the Helix UHP hose for cleaning of heat exchangers, the catch ring will assist the operator. Indicate at which distance from the end fitting it needs to be crimped on the hose.



### Hose arrester

Hose arrestors are the safest way to restrain high-pressure hoses from whiplash in the event of a blow out, protecting operators and/or equipment. Strongly recommended for high-pressure applications. Pull strength ranging from 13,72 kN to 24,77 kN.



### Bend restrictor

Transfer Oil bend restrictors are designed to protect the hose assembly from kinking and bending stresses at the hose and fitting junction that can occur during harsh operating conditions.



# Hose selection by working pressure and ID

hose	color code	Working pressure (Bar)										
		DN	3	4	5	6	8	10	12	20	25	
		dash	-	-2	-3	-4	-5	-6	-8	-12	-1	
		inch	1/8	5/32	3/16	1/4	5/16	3/8	1/2	3/4	1	
2SW	<b>202B</b>	●		<b>1040</b>								
	<b>2020</b>	●			<b>1200</b>							
	<b>2021</b>	●				<b>1040</b>						
	<b>2022</b>	●					<b>1040</b>					
	<b>2023</b>	●						<b>1040</b>				
	<b>2024</b>	●							<b>690</b>			
	<b>2025</b>	●								<b>690</b>		
2SWH	<b>2120</b>	●		<b>1500</b>								
	<b>2121</b>	●			<b>1400</b>							
2+2SW	<b>2030</b>	●		<b>1400</b>								
	<b>2032</b>	●				<b>1380</b>						
	<b>2033</b>	●					<b>1380</b>					
	<b>2034</b>	●						<b>1100</b>				
	<b>2035</b>	●								<b>1040</b>		
	<b>2037</b>	●									<b>760</b>	
4SW	<b>2040</b>	●		<b>2200</b>								
	<b>2041</b>	●			<b>1800</b>							
	<b>2042</b>	●				<b>1640</b>						
	<b>2043</b>	●					<b>1500</b>					
	<b>2044</b>	●						<b>1400</b>				
	<b>2045</b>	●							<b>1300</b>			
	<b>2047</b>	●								<b>1040</b>		
	<b>2048</b>	●									<b>1040</b>	
4SWH	<b>2145</b>	●							<b>1400</b>			
4SWT	<b>2241</b>	N/A			<b>1100</b>							
4+2SW	<b>2055</b>	●							<b>1400</b>			
	<b>2057</b>	●								<b>1200</b>		
6SW	<b>2060</b>	●		<b>2800</b>								
	<b>2061</b>	●			<b>2500</b>							
	<b>2063</b>	●					<b>2100</b>					
	<b>2064</b>	●						<b>2070</b>				
	<b>2065</b>	●							<b>1800</b>			
	<b>2067</b>	●								<b>1400</b>		
	<b>2068</b>	●									<b>1200</b>	
6SWH	<b>2161</b>	●			<b>2800</b>							
	<b>2162</b>	●				<b>2800</b>						
	<b>2163</b>	●					<b>2500</b>					
	<b>2165</b>	●						<b>2070</b>				
	<b>2167</b>	●								<b>1600</b>		
6SWHX	<b>2261</b>	●			<b>3200</b>							
	<b>2263</b>	●					<b>2800</b>					
	<b>2265</b>	●						<b>2500</b>				
6SWHDC	<b>2363</b>	●					<b>2500</b>					
8SW	<b>2081</b>	●			<b>4000</b>							
	<b>2083</b>	●					<b>3800</b>					
	<b>2085</b>	●							<b>3010</b>			

# Hose family selection by pressure rating

	Bar Psi	700 10000	900 13000	1100 15900	1300 18800	1500 21700	1700 24600	1900 27500	2100 30400	2300 33300	2500 36200	2800 40600	3000 43500	3500 50700	4000 58000	
<b>202</b> 2SW		690 to 1200 bar (10000 to 17400 psi)														
<b>212</b> 2SWH		1400 to 1500 bar (20300 to 21700 psi)														
<b>203</b> 2+2SW		760 to 1400 bar (11000 to 20300 psi)														
<b>204</b> 4SW		1040 to 2200 bar (15000 to 31900 psi)														
<b>214</b> 4SWH		Up to 1400 bar (up to 20300 psi)														
<b>224</b> 4SWT		Up to 1100 bar (up to 16000 psi)														
<b>205</b> 4+2SW		1200 to 1400 bar (17400 to 20300 psi)														
<b>206</b> 6SW		1200 to 2800 bar (17400 to 40600 psi)														
<b>216</b> 6SWH		1600 to 2800 bar (23200 to 40600 psi)														
<b>226</b> 6SWHX		2500 to 3200 bar (36250 to 46400 psi)														
<b>236</b> 6SWHDC		Up to 2500 bar (36200 psi)														
<b>208</b> 8SW		From 3010 to 4000 bar (43600 to 58000 psi)														

## Pressure drop table

HOSE ID	1/8		5/32		3/16		1/4		5/16		3/8		1/2		3/4		1		
	Flow (l/min)	Speed (m/s)	Δp (bar)	Speed (m/s)	Δp (bar)	Speed (m/s)	Δp (bar)	Speed (m/s)	Δp (bar)	Speed (m/s)	Δp (bar)	Speed (m/s)	Δp (bar)	Speed (m/s)	Δp (bar)	Speed (m/s)	Δp (bar)	Speed (m/s)	Δp (bar)
2	3,7	6,0																	
4	7,3	20,0																	
6	11,0	40,7	8,0	18,8															
8	14,7	67,5	10,6	31,1	6,8	10,8													
10	18,4	100,1	13,3	46,1	8,5	15,9	5,3	5,3											
15	27,5	205,5	19,9	94,5	12,7	32,6	8,0	10,8											
20			26,5	157,6	17,0	54,3	10,7	18,0	6,8	6,1									
30					25,5	111,7	16,0	37,0	10,2	12,6	6,5	4,3							
40							21,4	61,8	13,6	20,9	8,7	7,1	5,2	2,1					
50									17,0	31,1	10,8	10,6	6,5	3,1					
100									34,0	108,0	21,7	36,6	13,0	10,7	6,0	1,7			
150											32,5	75,9	19,4	22,1	9,0	3,5			
200													25,9	37,1	12,0	5,9	6,9	1,6	
300															18,0	12,2	10,4	3,2	
400															24,0	20,5	13,8	5,4	
500																	17,3	8,1	
600																	20,7	11,3	

### KEY

Δp (bar) on a free length of 10m. Medium: water 20°C

Selection of an undersized hose could lead to high fluid velocity causing an excessive pressure drop and heat built up, with resultant damage to overall system performance. After determining the system pressure, hose selection should be made so that the recommended Max WP is equal or greater than the maximum system pressure.

Do not exceed the recommended working temperature.

### Classification code

- Grey section of the table refers to velocity < 15 m/s (low drop pressure - recommended)
- Orange section of the table refers to velocity > 15 m/s (high drop pressure - not recommended)

# UHP Helix hoses

## 202 2SW

From 690 to 1200 bar (10000 to 17400 psi)



Part No.	Hose size			ID		OD		WP	
	dash	inch	DN	mm	inch	mm	inch	bar	psi
202B	-2	1/8	3	3,5	0,138	7,2	0,283	1040	15000
2020	-	5/32	4	4,1	0,161	8,2	0,323	1200	17400
2021	-3	3/16	5	5,2	0,205	9,8	0,386	1040	15000
2022	-4	1/4	6	6,4	0,252	11,5	0,453	1040	15000
2023	-5	5/16	8	7,9	0,311	13,7	0,539	1040	15000
2024	-6	3/8	10	9,9	0,390	16,4	0,646	690	10000
2025	-8	1/2	12	12,8	0,504	20,4	0,803	690	10000

### FEATURES AND APPLICATIONS

- High resistance against abrasion
- Low volumetric expansion at maximum working pressure
- Used in very high pressure applications like heat exchanger tube cleaning in the chemical and refining industries
- Compact fitting available

### AVAILABLE INSERTS

\* also available as compact fitting

- |                 |              |               |                   |
|-----------------|--------------|---------------|-------------------|
| - F-BSPP        | - F-NPT      | - M-GAS*      | - Male DIN3852    |
| - M-BSPP        | - M-NPT*     | - Male Met    | - M-Flat Seal Met |
| - F-Met 24°-60° | - Type-M Fem | - GAS 100°    |                   |
| - F-DKOS        | - M-MP       | - M-Uisit     |                   |
| - F-JIC         | - M-HP       | - M-Flat Seal |                   |

## 212 2SWH

From 1400 to 1500 bar (20300 to 21700 psi)



Part No.	Hose size			ID		OD		WP	
	dash	inch	DN	mm	inch	mm	inch	bar	psi
2120	-	5/32	4	3,9	0,154	8,0	0,315	1500	21700
2121	-3	3/16	5	4,8	0,189	9,3	0,366	1400	20300

### FEATURES AND APPLICATIONS

- High resistance against abrasion
- Low volumetric expansion at maximum working pressure
- Used in very high pressure applications like heat exchanger tube cleaning in the chemical and refining industries
- Compact fitting available
- Improved flexibility

### AVAILABLE INSERTS

\* also available as compact fitting

- |          |                |                    |
|----------|----------------|--------------------|
| - F-BSPP | - M-NPT*       | - M-Flat Seal Met* |
| - F-DKOS | - M-Flat Seal* |                    |

## 203 2+2SW

From 760 to 1400 bar (11000 to 20300 psi)



Part No.	Hose size			ID		OD		WP	
	dash	inch	DN	mm	inch	mm	inch	bar	psi
2030	-	5/32	4	4,0	0,157	10,3	0,406	1400	20300
2032	-4	1/4	6	6,2	0,244	13,2	0,520	1380	20000
2033	-5	5/16	8	7,9	0,311	15,4	0,606	1380	20000
2034	-6	3/8	10	9,9	0,390	18,2	0,717	1100	15900
2035	-8	1/2	12	12,8	0,504	22,1	0,870	1040	15000
2037	-12	3/4	20	18,8	0,740	29,9	1,177	760	11000

### FEATURES AND APPLICATIONS

- Waterblast application specifically suited for lances
- Ships, tanks and vessel cleaning
- General industrial cleaning applications
- Removal of accumulated dirt from surfaces

### AVAILABLE INSERTS

- |                 |              |               |                      |
|-----------------|--------------|---------------|----------------------|
| - F-BSPP        | - F-NPT      | - M-GAS       | - Male DIN3852       |
| - M-BSPP        | - M-NPT      | - Male Met    | - Male Flat Seal Met |
| - F-Met 24°-60° | - Type-M Fem | - GAS 100°    |                      |
| - F-DKOS        | - M-MP       | - M-Uisit     |                      |
| - F-JIC         | - M-HP       | - M-Flat Seal |                      |

# UHP Helix hoses

## 204 4SW

From 900 to 2200 bar (13000 to 31900 psi)



Part No.	Hose size			ID		OD		WP	
	dash	inch	DN	mm	inch	mm	inch	bar	psi
● 2040	-	5/32	4	4,0	0,157	9,90	0,390	2200	31900
● 2041	-3	3/16	5	5,1	0,201	11,6	0,457	1800	26100
● 2042	-4	1/4	6	6,3	0,248	13,3	0,524	1640	23700
● 2043	-5	5/16	8	8,2	0,323	15,6	0,614	1500	21700
● 2044	-6	3/8	10	9,9	0,390	18,8	0,740	1400	20300
● 2045	-8	1/2	12	12,8	0,504	21,6	0,850	1300	18800
● 2047	-12	3/4	20	18,8	0,740	30,0	1,181	1040	15000
● 2048	-16	1	25	24,8	0,976	38,3	1,508	1040	15000

### FEATURES AND APPLICATIONS

- High resistance against abrasion
- Low volumetric expansion at maximum working pressure
- Hydrodemolition and removal of accumulated dirt
- Specific sizes for bolting industry

### AVAILABLE INSERTS

\* also available as compact fitting

- F-BSPP
- M-BSPP
- F-Met 24°-60°
- F-DKOS
- F-JIC
- M-NPT
- Type-M Fem
- M-MP
- M-HP
- M-GAS
- GAS 100°
- M-Usit
- Male DIN3852

## 214 4SWH

Up to 1400 bar (up to 20300 psi)



Part No.	Hose size			ID		OD		WP	
	dash	inch	DN	mm	inch	mm	inch	bar	psi
● 2145	-8	1/2	12	12,8	0,504	22,5	0,886	1400	20300

### FEATURES AND APPLICATIONS

- High resistance against abrasion
- Low volumetric expansion at maximum working pressure
- Hydrodemolition and removal of accumulated dirt
- Waterblast application specifically suited for lances

### AVAILABLE INSERTS

- F-BSPP
- F-DKOS
- F-JIC
- M-NPT
- Type-M Fem
- M-MP
- M-HP

## 224 4SWT

Up to 1100 bar (up to 16000 psi)



Part No.	Hose size			ID		OD		WP	
	dash	inch	DN	mm	inch	mm	inch	bar	psi
- 2241	-3	3/16	5	5,1	0,201	11,6	0,457	1100*	15900*

\* Safety factor 4:1

### FEATURES AND APPLICATIONS

- PVDF inner tube
- Oil and Gas applications
- Control of subsea components
- Methanol service | Chemical injection | Nitrogen service
- Suitable for applications up to 100°C (212°F)

### AVAILABLE INSERTS

- F-BSPP
- M-BSPP
- F-Met 24°-60°
- F-DKOS
- M-NPT
- Type-M Fem
- M-HP
- GAS 100°
- M-Usit

# UHP Helix hoses

## 205 4+2SW

From 1200 to 1400 bar (17400 to 20300 psi)



Part No.	Hose size		ID		OD		WP		
	dash	inch	DN	mm	inch	mm	inch	bar	psi
2055	-8	1/2	12	12,80	0,504	24,30	0,957	1400	20300
2057	-12	3/4	20	18,80	0,740	32,60	1,283	1200	17400

### FEATURES AND APPLICATIONS

- Waterblast application specifically suited for lances
- Ships, tanks and vessel cleaning
- General industrial cleaning applications
- Removal of accumulated dirt from surfaces like runways and roads

### AVAILABLE INSERTS

- F-BSPP
- F-JIC
- Type-M Fem
- M-HP
- F-DKOS
- M-NPT
- M-MP

## 206 6SW

From 1200 to 2800 bar ( 17400 to 40600 psi)



Part No.	Hose size		ID		OD		WP		
	dash	inch	DN	mm	inch	mm	inch	bar	psi
2060	-	5/32	4	4,0	0,157	11,8	0,465	2800	40600
2061	-3	3/16	5	5,0	0,197	14,4	0,567	2500	36200
2063	-5	5/16	8	7,9	0,311	18,0	0,709	2100	30400
2064	-6	3/8	10	9,9	0,390	20,8	0,819	2070	30000
2065	-8	1/2	12	12,8	0,504	25,4	1,000	1800	26100
2067	-12	3/4	20	18,8	0,740	33,7	1,327	1400	20300
2068	-16	1	25	24,8	0,976	41,0	1,614	1200	17400

### FEATURES AND APPLICATIONS

- Flexible
- Ideal for long lengths instead of steel pipes
- Waterjet cutting
- Ultra high pressure waterblast used also with lances
- Hydrodemolition
- Removal of accumulated dirt from surfaces

### AVAILABLE INSERTS

- F-BSPP
- Type-M Fem
- M-Met HP
- F-Met 24°-60°
- M-MP
- F-HP
- F-DKOS
- M-HP
- GAS 100°

## 236 6SWHDC

Up to 2800 bar (40600 psi)



Part No.	Hose size		ID		OD		WP		
	dash	inch	DN	mm	inch	mm	inch	bar	psi
2363	-5	5/16	8	8,1	0,319	22,50	0,886	2500	36200

### FEATURES AND APPLICATIONS

- Double cover
- Flexible
- Ultra high pressure waterblast specific for construction and shipbuilding where extra wear resistance is required
- Hydrodemolition
- Removal of accumulated dirt from surfaces

### AVAILABLE INSERTS

- F-DKOS
- M-MP
- M-Met HP
- Type-M Fem
- M-HP



# UHP Helix hoses

## 216 6SWH

From 2000 to 2800 bar (29000 to 40600 psi)



Part No.	Hose size			ID		OD		WP	
	dash	inch	DN	mm	inch	mm	inch	bar	psi
● 2161	-3	3/16	5	5,0	0,197	14,8	0,583	2800	40600
● 2162	-4	1/4	6	6,3	0,248	16,5	0,650	2800	40600
● 2163	-5	5/16	8	8,1	0,319	19,0	0,748	2500	36200
● 2165	-8	1/2	12	12,8	0,504	25,9	1,020	2070	30000
● 2167	-12	3/4	20	18,8	0,740	33,7	1,327	1600	23200

### FEATURES AND APPLICATIONS

- Flexible
- Ideal for long lengths instead of steel pipes
- Waterjet cutting
- Ultra high pressure waterblast used also with lances
- Hydrodemolition
- Removal of accumulated dirt from surfaces

### AVAILABLE INSERTS

- F-BSPP
- F-Met 24°-60°
- F-DKOS
- Type-M Fem
- M-MP
- M-HP
- M-Met HP
- F-HP
- GAS 100°

## 226 6SWHX

From 2500 to 3200 bar ( 36250 to 46400 psi)



Part No.	Hose size			ID		OD		WP	
	dash	inch	DN	mm	inch	mm	inch	bar	psi
● 2261	-3	3/16	5	4,60	0,181	14,8	0,583	3200	46400
● 2263	-5	5/16	8	7,60	0,299	19,4	0,764	2800	40600
● 2265	-8	1/2	12	12,8	0,504	26,0	1,024	2500	36250

### FEATURES AND APPLICATIONS

- Flexible
- Ideal for long lengths instead of steel pipes
- Waterjet cutting
- Ultra high pressure waterblast used also with lances
- Hydrodemolition
- Removal of accumulated dirt from surfaces

### AVAILABLE INSERTS

- F-BSPP
- F-Met 24°-60°
- F-DKOS
- Type-M Fem
- M-MP
- M-HP
- M-Met HP
- F-HP

## 208 8SW

From 3010 to 4000 bar (43600 to 58000 psi)



Part No.	Hose size			ID		OD		WP	
	dash	inch	DN	mm	inch	mm	inch	bar	psi
● 2081	-3	3/16	5	4,70	0,185	16,00	0,630	4000	58000
● 2083	-5	5/16	8	7,60	0,299	22,00	0,866	3800	55100
● 2085	-8	1/2	12	12,8	0,504	28,70	1,130	3010	43600

### FEATURES AND APPLICATIONS

- Flexible
- Ideal for long lengths instead of steel pipes
- Waterjet cutting
- Ultra high pressure waterblast used also with lances
- Hydrodemolition
- Removal of accumulated dirt from surfaces

### AVAILABLE INSERTS

- F-BSPP
- F-Met 24°-60°
- F-DKOS
- Type-M Fem
- M-HP
- M-Met HP
- F-HP

# UHP Helix ferrules

## HAA 2SW



Carbon Steel Part No.	Stainless Steel Part No.	Description	Hose size		C mm	D mm	L mm
			DN	Inches			
HAA1G1	-	1/8 FERRULE HELIX 2SW	3	1/8	12,6	8,4	33,5
HAA101	HAA801	5/32 FERRULE HELIX 2SW	4	5/32	12,2	9,2	34,0
HAA111	HAA811	3/16 FERRULE HELIX 2SW	5	3/16	14,0	10,6	40,0
HAA121	HAA821	1/4 FERRULE HELIX 2SW	6	1/4	16,0	12,7	42,0
HAA131	-	5/16 FERRULE HELIX 2SW	8	5/16	21,0	14,8	41,0
HAA141	-	3/8 FERRULE HELIX 2SW	10	3/8	23,5	17,0	50,0
HAA151	-	1/2 FERRULE HELIX 2SW	12	1/2	29,0	21,2	55,0

## HAJ 2SWH



Carbon Steel Part No.	Stainless Steel Part No.	Description	Hose size		C mm	D mm	L mm
			DN	Inches			
HAJ101	HAJ801	5/32 FERRULE HELIX 2SWH	4	5/32	12,2	9,6	34,0
HAJ111	HAJ811	3/16 FERRULE HELIX 2SWH	5	3/16	13,8	11,0	40,0

## HAB 2+2SWH



Carbon Steel Part No.	Stainless Steel Part No.	Description	Hose size		C mm	D mm	L mm
			DN	Inches			
HAB101	HAB801	5/32 FERRULE HELIX 2+2SW	4	5/32	16,0	11,3	34,0
HAB121	HAB821	1/4 FERRULE HELIX 2+2SW	6	1/4	19,5	14,2	42,0
HAB131	HAB831	5/16 FERRULE HELIX 2+2SW	8	5/16	23,4	16,6	44,0
HAB141	HAB841	3/8 FERRULE HELIX 2+2SW	10	3/8	25,7	19,5	50,0
HAB151	HAB851	1/2 FERRULE HELIX 2+2SW	12	1/2	31,0	23,0	60,0
HAB171	HAB871	3/4 FERRULE HELIX 2+2SW	20	3/4	40,5	32,2	69,0

## HAC 4SW



Carbon Steel Part No.	Stainless Steel Part No.	Description	Hose size		C mm	D mm	L mm
			DN	Inches			
HAC101	HAC801	5/32 FERRULE HELIX 4SW	4	5/32	16,8	12,0	45,0
HAC111	HAC811	3/16 FERRULE HELIX 4SW	5	3/16	18,0	12,5	40,0
HAC121	HAC821	1/4 FERRULE HELIX 4SW	6	1/4	19,5	14,0	43,0
HAC131	HAC831	5/16 FERRULE HELIX 4SW	8	5/16	23,0	16,4	45,0
HAC141	HAC841	3/8 FERRULE HELIX 4SW	10	3/8	26,0	20,0	50,0
HAC151	HAC851	1/2 FERRULE HELIX 4SW	12	1/2	32,0	23,2	62,0
HAC171	-	3/4 FERRULE HELIX 4SW	20	3/4	41,0	31,6	70,0
-	HAC881	1 FERRULE HELIX 4SW	25	1	49,3	39,8	75,0

## HAD 4SWH



Carbon Steel Part No.	Stainless Steel Part No.	Description	Hose size		C mm	D mm	L mm
			DN	Inches			
HAD151	HAD851	1/2 FERRULE HELIX 4SWH	12	1/2	33,0	24,5	62,0

# UHP Helix ferrules

## HAG 4+2SWH



Carbon Steel Part No.	Stainless Steel Part No.	Description	Hose size		C mm	D mm	L mm
			DN	Inches			
HAG151	-	1/2 FERRULE HELIX 4+2SW	12	1/2	25,0	33,7	62,0
HAG171	-	3/4 FERRULE HELIX 4+2SW	20	3/4	45,0	34,0	71,5

## HAE 6SW



Carbon Steel Part No.	Stainless Steel Part No.	Description	Hose size		C mm	D mm	L mm
			DN	Inches			
HAE101	-	5/32 FERRULE HELIX 6SW	4	5/32	17,6	12,8	45,0
HAE111	HAE811	3/16 FERRULE HELIX 6SW	5	3/16	22,5	15,0	63,5
HAE131	-	5/16 FERRULE HELIX 6SW	8	5/16	26,4	18,4	63,5
HAE141	-	3/8 FERRULE HELIX 6SW	10	3/8	31,2	22,5	52,0
HAE151	HAE851	1/2 FERRULE HELIX 6SW	12	1/2	35,5	26,8	66,0
HAE171	-	3/4 FERRULE HELIX 6SW	20	3/4	46,0	35,0	72,0
HAE181	-	1 FERRULE HELIX 6SW	25	1	52,2	41,8	78,0

## HAF 6SWH



Carbon Steel Part No.	Stainless Steel Part No.	Description	Hose size		C mm	D mm	L mm
			DN	Inches			
HAF111	-	3/16 FERRULE HELIX 6SWH	5	3/16	22,7	15,2	64,0
HAF121	-	1/4 FERRULE HELIX 6SWH	6	1/4	24,4	17,2	64,0
HAF131	-	5/16 FERRULE HELIX 6SWH	8	5/16	28,0	20,0	64,0
HAF132	-	5/16 FERRULE HELIX 6SWH DC	8	5/16	28,0	20,0	70,0
HAF151	-	1/2 FERRULE HELIX 6SWH	12	1/2	36,2	27,2	66,0
HAF171	-	3/4 FERRULE HELIX 6SWH	20	3/4	46,0	34,6	72,0

## HAH 6SWHX



Carbon Steel Part No.	Stainless Steel Part No.	Description	Hose size		C mm	D mm	L mm
			DN	Inches			
HAH111	-	3/16 FERRULE HELIX 6SWHX	5	3/16	24,7	15,9	69,0
HAH131	-	5/16 FERRULE HELIX 6SWHX	8	5/16	29,2	21,0	66,5
HAH151	-	1/2 FERRULE HELIX 6SWHX	12	1/2	37,6	28,4	75,0

## HAI 8SW



Carbon Steel Part No.	Stainless Steel Part No.	Description	Hose size		C mm	D mm	L mm
			DN	Inches			
HAI111	-	3/16 FERRULE HELIX 8SW	5	3/16	26,1	16,8	69,0
HAI131	-	5/16 FERRULE HELIX 8SW	8	5/16	32,7	23,5	69,0
HAI151	-	1/2 FERRULE HELIX 8SW	12	1/2	38,6	31,4	75,0

# UHP Helix inserts

## HB BSPP FEMALE



Carbon steel	Stainless steel	Description	Cone °	WP psi	Thread F	Hose compatibility
HBA12G	-	1/4" F-BSPP A 1/8"	24-60	22000	1/4"-19 GAS	202B
HBB120	-	1/4" F-BSPP B/A 5/32"	24-60	22000	1/4"-19 GAS	2020,2030
HBJ120	-	1/4" F-BSPP B/A 5/32"	24-60	22000	1/4"-19 GAS	2120
HBC120	-	1/4" F-BSPP C 5/32"	24-60	31900	1/4"-19 GAS	2040
HBA121	-	1/4" F-BSPP A 3/16"	24-60	22000	1/4"-19 GAS	2021
HBJ121	-	1/4" F-BSPP A 3/16"	24-60	22000	1/4"-19 GAS	2121
HBC121	HBC821	1/4" F-BSPP C 3/16"	24-60	26100	1/4"-19 GAS	2041,2241
-	HBF821	1/4" F-BSPP F/E 3/16"	24-60	40600	1/4"-19 GAS	2061,2161
-	HBI821	1/4" F-BSPP I/H 3/16"	24-60	40600	1/4"-19 GAS	2261,2081
HBB122	HBB822	1/4" F-BSPP B/A 1/4"	24-60	22000	1/4"-19 GAS	2022,2032
HBC122	HBC822	1/4" F-BSPP C 1/4"	24-60	24000	1/4"-19 GAS	2042
HBA143	-	3/8" F-BSPP A 5/16"	24-60	22000	3/8"-19 GAS	2023
HBC143	HBC843	3/8" F-BSPP C/B 5/16"	24-60	22000	3/8"-19 GAS	2033,2043
HBB154	HBB854	1/2" F-BSPP B/A 3/8"	24-60	22000	1/2"-14 GAS	2024,2034
HBE154	HBE854	1/2" F-BSPP E/C 3/8"	24-60	28000	1/2"-14 GAS	2044,2064
HBA155	HBA855	1/2" F-BSPP A 1/2"	24-60	18000	1/2"-14 GAS	2025
HBG155	HBG855	1/2" F-BSPP G/D/C/B 1/2"	24-60	22000	1/2"-14 GAS	2035,2045,2145,2055
HBG187	-	1" F-BSPP G/C/A 3/4"	60	18000	1"-11 GAS	2037,2047,2057
-	HBC898	1+1/4" F-BSPP C 1"	60	15000	1+1/4"-11 GAS	2048

## HP BSPP MALE



Carbon steel	Stainless steel	Description	WP psi	Thread F	Hose compatibility
HPB120	-	1/4 M-BSPP B/A 5/32	22000	1/4-19 GAS	2020, 2030
HPC100	-	1/8 M-BSPP C 5/32	31900	1/8-28 GAS	2040
HPA121	-	1/4 M-BSPP A 3/16	22000	1/4-19 GAS	2021
HPC121	HPC821	1/4 M-BSPP C 3/16	26100	1/4-19 GAS	2241, 2041
HPB102	-	1/8 M-BSPP B/A 1/4	22000	1/8-28 GAS	2022, 2032
HPB122	-	1/4 M-BSPP B/A 1/4	22000	1/4-19 GAS	2022, 2032
HPB142	-	3/8 M-BSPP B/A 1/4	22000	3/8-19 GAS	2022, 2032
HPC122	-	1/4 M-BSPP C 1/4	24000	1/4-19 GAS	2042
HPA123	-	1/4 M-BSPP A 5/16	22000	1/4-19 GAS	2023
HPA143	-	3/8 M-BSPP A 5/16	22000	3/8-19 GAS	2023
HPC123	-	1/4 M-BSPP C/B 5/16	22000	1/4-19 GAS	2033, 2043
HPC143	-	3/8 M-BSPP C/B 5/16	24000	3/8-19 GAS	2033, 2043
HPB144	-	3/8 M-BSPP B/A 3/8	22000	3/8-19 GAS	2034, 2024
HPC144	-	3/8 M-BSPP C 3/8	22000	3/8-19 GAS	2044

## HC METRIC 24°/60° FEMALE



Carbon steel	Stainless steel	Description	WP psi	Thread F	Hose compatibility
HCA131	-	14X1.5 F-MET24-60 A 3/16	22000	M14X1,5	2021
HCC131	-	14X1.5 F-MET24-60 C 3/16	26100	M14X1,5	2041, 2241
-	HCF831	14X1.5 F-MET24-60 F/E 3/16	45000	M14X1,5	2061, 2161
-	HCI831	14X1.5 F-MET24-60 I/H 3/16	45000	M14x1,5	2261, 2081
HCB132	-	14X1.5 F-MET24-60 B/A 1/4	22000	M14X1,5	2022, 2032
HCB142	HCB842	16X1.5 F-MET24-60 B/A 1/4	22000	M16X1,5	2022, 2032

# UHP Helix inserts

## HD DKOS FEMALE



Carbon steel	Stainless steel	Description	WP psi	Thread F	Hose compatibility
HDB180	-	24X1.5 F-DKOS B/A 5/32"	30000	M24x1,5	2020,2030
HDJ180	HDJ880	24X1.5 F-DKOS B/A 5/32"	30000	M24x1,5	2120
HDA181	-	24X1.5 F-DKOS A 3/16"	30000	M24x1,5	2021
HDJ181	HDJ881	24X1.5 F-DKOS A 3/16"	30000	M24x1,5	2121
HDC161	-	20X1.5 F-DKOS C 3/16"	30000	M20x1,5	2041,2241
HDB152	-	18X1.5 F-DKOS B/A 1/4"	24000	M18x1,5	2022,2032
HDB172	-	22X1.5 F-DKOS B/A 1/4"	24000	M22x1,5	2022,2032
HDB182	-	24X1.5 F-DKOS B/A 1/4"	24000	M24x1,5	2022,2032
HDC152	-	18X1.5 F-DKOS C 1/4"	30000	M18x1,5	2042
HDA163	-	20X1.5 F-DKOS A 5/16"	30000	M20x1,5	2023
HDA183	-	24X1.5 F-DKOS A 5/16"	30000	M24x1,5	2023
HDB163	-	20X1.5 F-DKOS B 5/16"	40000	M20x1,5	2033,2043
HDC173	-	22X1.5 F-DKOS C/B 5/16"	40000	M22x1,5	2033,2043
HDC183	HDC883	24X1.5 F-DKOS C/B 5/16"	40000	M24x1,5	2033,2043
HDF183	HDF883	24X1.5 F-DKOS F/E 5/16"	40000	M24x1,5	2063,2163
-	HDI883	24X1.5 F-DKOS I/H 5/16"	46400	M24x1,5	2263,2083
HDB174	-	22X1.5 F-DKOS B/A 3/8"	28000	M22x1,5	2024,2034
HDB184	-	24X1.5 F-DKOS B/A 3/8"	28000	M24x1,5	2024,2034
-	HDE874	22X1.5 F-DKOS E/C 3/8"	30000	M22x1,5	2044,2064
HDE184	HDE884	24X1.5 F-DKOS E/C 3/8"	30000	M24x1,5	2044,2064
HDA175	-	22X1.5 F-DKOS A 1/2"	18000	M22x1,5	2025
HDA185	HDA885	24X1.5 F-DKOS A 1/2"	18000	M24x1,5	2025
HDG175	-	22X1.5 F-DKOS G/D/C/B 1/2"	22000	M22x1,5	2035,2045,2145,2055
HDG185	HDG885	24X1.5 F-DKOS G/D/C/B 1/2"	22000	M24x1,5	2035,2045,2145,2055
HDF185	HDF885	24X1.5 F-DKOS F/E 1/2"	30000	M24x1,5	2065,2165
-	HDI885	24X1.5 F-DKOS I/H 1/2"	43000	M24x1,5	2265,2085
HDE1G7	-	36X2 F-DKOS E/G/C/B/A 3/4"	24000	M36x2	2027,2037,2047,2057,2067
-	HDE8H8	42X2 F-DKOS E/C 1"	22000	M42x2	2048,2068

## HE JIC FEMALE



Carbon steel	Stainless steel	Description	WP psi	Thread F	Hose compatibility
-	HEB8B2	9/16 F-JIC B/A 1/4	22000	9/16-18 UNF	2022, 2032
-	HEC8B2	9/16 F-JIC C 1/4	24000	9/16-18 UNF	2042
HEA1B3	HEA8B3	9/16 F-JIC A 5/16	22000	9/16-18 UNF	2023
-	HEC873	3/4 F-JIC C/B 5/16	22000	3/4-16 UNF	2033, 2043
HEB174	HEB874	3/4 F-JIC B/A 3/8	22000	3/4-16 UNF	2024, 2034
HEC174	HEC874	3/4 F-JIC C 3/8	22000	3/4-16 UNF	2044
HEG1C5	HEG8C5	7/8 F-JIC G/D/C/B 1/2	22000	7/8-14 UNF	2035, 2045, 2145, 2055
-	HEG8F7	1+5/16 F-JIC G/C/A 3/4	24000	1+5/16-12 UN	2037, 2047, 2057
-	HEC8F8	1+5/16 F-JIC C 1	15000	1+5/16-12 UN	2048

## HH NPT FEMALE



Carbon steel	Stainless steel	Description	WP psi	Thread F	Hose compatibility
HHB122	-	1/4 F-NPT B/A 1/4	22000	1/4-18 NPTF	2022, 2032

# UHP Helix inserts

## HW NPT NO HEX MALE



Carbon steel	Stainless steel	Description	WP psi	Thread F	Hose compatibility
HWA1QG	-	1/16 M-NPT A 1/8 NO HEX	22000	1/16-27 NPTF	202B
HWB122	-	1/4 M-NPT B/A 1/4 NO HEX	22000	1/4-18 NPTF	2022, 2032

## HL MP MALE



Carbon steel	Stainless steel	Description	WP psi	Thread F	Hose compatibility
-	HLC842	3/8 M-MPC 1/4	22500	3/8-24 UNF LH	2042
HLC1B3	-	9/16 M-MP C/B 5/16	22500	9/16-18 UNF LH	2033, 2043
HLC173	HLC873	3/4 M-MP C/B 5/16	22500	3/4-16 UNF LH	2033, 2043
-	HLF873	3/4 M-MP F/E 5/16	22500	3/4-16 UNF LH	2063, 2163, 2363
-	HLI873	3/4 M-MP I/H 5/16	22500	3/4-16 UNF LH	2263
-	HLA8B5	9/16 M-MP A 1/2	22500	9/16-18 UNF LH	2025
-	HLF8B5	9/16 M-MP F/E 1/2	22500	9/16-18 UNF LH	2065, 2165
-	HLF875	3/4 M-MP F/E 1/2	22500	3/4-16 UNF LH	2065, 2165
-	HLG8B5	9/16 M-MP G/D/C/B 1/2	22500	9/16-18 UNF LH	2035, 2045, 2145, 2055
-	HLG875	3/4 M-MP G/D/C/B 1/2	22500	3/4-16 UNF LH	2035, 2045, 2145, 2055
-	HLE887	1 M-MP E/G/C/B/A 3/4	22500	1-14 UNS LH	2037, 2047, 2057, 2067
-	HLE888	1 M-MP E 1	20000	1-14 UNS LH	2068

## HI NPT MALE



Carbon steel	Stainless steel	Description	WP psi	Thread F	Hose compatibility
HIB1Q0	-	1/16 M-NPT B/A 5/32	22000	1/16-27 NPTF	2020, 2030
HIB100	-	1/8 M-NPT B/A 5/32	22000	1/8-27 NPTF	2020, 2030
HIB120	-	1/4 M-NPT B/A 5/32	22000	1/4-18 NPTF	2020, 2030
HIC100	-	1/8 M-NPT C 5/32	22000	1/8-27 NPTF	2040
HIA101	-	1/8 M-NPT A 3/16	22000	1/8-27 NPTF	2021
HIA121	-	1/4 M-NPT A 3/16	22000	1/4-18 NPTF	2021
HIC121	-	1/4 M-NPT C 3/16	22000	1/4-18 NPTF	2041, 2241
HIB102	-	1/8 M-NPT B/A 1/4	22000	1/8-27 NPTF	2022, 2032
HIB122	HIB822	1/4 M-NPT B/A 1/4	22000	1/4-18 NPTF	2022, 2032
HIB142	-	3/8 M-NPT B/A 1/4	22000	3/8-18 NPTF	2022, 2032
HIC122	-	1/4 M-NPT C 1/4	22000	1/4-18 NPTF	2042
HIA123	-	1/4 M-NPT A 5/16	22000	1/4-18 NPTF	2023
HIA143	-	3/8 M-NPT A 5/16	22000	3/8-18 NPTF	2023
HIC123	-	1/4 M-NPT C/B 5/16	22000	1/4-18 NPTF	2033, 2043
HIC143	-	3/8 M-NPT C/B 5/16	22000	3/8-18 NPTF	2033, 2043
HIB144	HIB844	3/8 M-NPT B/A 3/8	22000	3/8-18 NPTF	2024, 2034
-	HIB854	1/2 M-NPT B/A 3/8	22000	1/2-14 NPTF	2024, 2034
HIA155	HIA855	1/2 M-NPT A 1/2	18000	1/2-14 NPTF	2025
HIG155	HIG855	1/2 M-NPT G/D/C/B 1/2	22000	1/2-14 NPTF	2035, 2045, 2145, 2055
HIG177	-	3/4 M-NPT G/C/B 3/4	15000	3/4-14 NPT	2037, 2047, 2057
HIG187	HIG887	1 M-NPT G/C/B 3/4	15000	1-11,5 NPTF	2037, 2047, 2057
-	HIC888	1 M-NPT C 1	15000	1-11,5 NPTF	2048

# UHP Helix inserts

## HF TYPE-M FEMALE



Carbon steel	Stainless steel	Description	WP psi	Thread F	Hose compatibility
HFB1B0	HFB8B0	9/16 F-TYPE M B/A 5/32	30000	9/16-18 UNF	2020, 2030
-	HFE8B0	9/16 F-TYPE M E/C 5/32	58000	9/16-18 UNF	2040, 2060
HFA1B1	HFA8B1	9/16 F-TYPE M A 3/16	30000	9/16-18 UNF	2021
HFC1B1	HFC8B1	9/16 F-TYPE M C 3/16	30000	9/16-18 UNF	2041, 2241
-	HFF8B1	9/16 F-TYPE M F/E 3/16	45000	9/16-18 UNF	2061, 2161
-	HFI8B1	9/16 F-TYPE M I/H 3/16	58000	9/16-18 UNF	2261, 2081
HFB1B2	HFB8B2	9/16 F-TYPE M B/A 1/4	24000	9/16-18 UNF	2022, 2032
HFC1B2	HFC8B2	9/16 F-TYPE M C 1/4	30000	9/16-18 UNF	2042
-	HFF8B2	9/16 F-TYPE M F 1/4	45000	9/16-18 UNF	2162
-	HFA873	3/4 F-TYPE M A 5/16 SS	22000	3/4-16 UNF	2023
HFC173	HFC873	3/4 F-TYPE M C/B 5/16	22000	3/4-16 UNF	2033, 2043
HFF173	HFF873	3/4 F-TYPE M F/E 5/16	40000	3/4-16 UNF	2063, 2163, 2363
-	HFF8C3	7/8 F-TYPE M F/E 5/16	40000	7/8-14 UNF	2063, 2163, 2363
-	HFI873	3/4 F-TYPE M I/H 5/16	46400	3/4-16 UNF	2263, 2083
-	HFI8C3	7/8 F-TYPE M I/H 5/16	46400	7/8-14 UNF	2263, 2083
-	HFI8K3	1+1/8 F-TYPE M I/H 5/16	46400	1+1/8-12 UNF	2263, 2083
-	HFB874	3/4 F-TYPE M B/A 3/8 SS	22000	3/4-16 UNF	2024, 2034
-	HFC874	3/4 F-TYPE M C 3/8	22000	3/4-16 UNF	2044
HFA185	HFA885	1 F-TYPE M A 1/2	18000	1-12 UNF	2025
HFF185	HFF885	1 F-TYPE M F/E 1/2	30000	1-12 UNF	2065, 2165
-	HFG885	1 F-TYPE M G/D/C/B 1/2	22000	1-12 UNF	2035, 2045, 2145, 2055
-	HFI885	1 F-TYPE M I/H 1/2	43000	1-12 UNF	2265, 2085
-	HFE8F7	1+5/16 F-TYPE M E/G/C/B/A 3/4	24000	1+5/16-12 UN	2037, 2047, 2057, 2067
-	HFC8F8	1+5/16 F-TYPE M C 1	22000	1+5/16-12 UN	2048

## HM HP MALE



Carbon steel	Stainless steel	Description	WP psi	Thread F	Hose compatibility
-	HMB820	1/4 M-HP B/A 5/32	30000	1/4-28 UNF LH	2020, 2030
-	HME820	1/4 M-HP E/C 5/32	58000	1/4-28 UNF LH	2040, 2060
-	HME840	3/8 M-HP E/C 5/32	58000	3/8-24 UNF LH	2040, 2060
-	HME8B0	9/16 M-HP E/C 5/32	58000	9/16-18 UNF LH	2040, 2060
HMC121	HMC821	1/4 M-HP C 3/16	30000	1/4-28 UNF LH	2041, 2241
-	HMC841	3/8 M-HP C 3/16	30000	3/8-24 UNF LH	2041, 2241
-	HMC8B1	9/16 M-HP C 3/16	30000	9/16-18 UNF LH	2041, 2241
-	HMF821	1/4 M-HP F/E 3/16	45000	1/4-28 UNF LH	2061, 2161
-	HMI821	1/4 M-HP I/H 3/16	58000	1/4-28 UNF LH	2261, 2081
-	HMF841	3/8 M-HP F/E 3/16	45000	3/8-24 UNF LH	2061, 2161
-	HMI841	3/8 M-HP I/H 3/16	58000	3/8-24 UNF LH	2261, 2081
-	HMF8B1	9/16 M-HP F/E 3/16	45000	9/16-18 UNF LH	2061, 2161
-	HMI8B1	9/16 M-HP I/H 3/16	58000	9/16-18 UNF LH	2261, 2081
-	HMB8B2	9/16 M-HP B/A 1/4	24000	9/16-18 UNF LH	2022, 2032
-	HMC842	3/8 M-HP C 1/4	30000	3/8-24 UNF LH	2042
-	HMF842	3/8 M-HP F 1/4	46400	3/8-24 UNF LH	2162
-	HMF8B2	9/16 M-HP F 1/4	46400	9/16-18 UNF LH	2162
-	HMC8B3	9/16 M-HP C/B 5/16	30000	9/16-18 UNF LH	2033, 2043
-	HMF843	3/8 M-HP F/E 5/16	40000	3/8-24 UNF LH	2063, 2363, 2163
-	HMI843	3/8 M-HP I/H 5/16	46400	3/8-24 UNF LH	2263, 2083
-	HMF8B3	9/16 M-HP F/E 5/16	40000	9/16-18 UNF LH	2063, 2363, 2163
-	HMI8B3	9/16 M-HP I 5/16	55100	9/16-18 UNF LH	2263, 2083
-	HME8B4	9/16 M-HP E/C 3/8	40000	9/16-18 UNF LH	2044, 2064
-	HMG8B5	9/16 M-HP G/D/C/B 1/2	22000	9/16-18 UNF LH	2035, 2045, 2055, 2145
-	HMI8B5	9/16 M-HP I/H 1/2	36500	9/16-18 UNF LH	2265
-	HMF8B5	9/16 M-HP F/E 1/2	30000	9/16-18 UNF LH	2065, 2165

# UHP Helix inserts

## HN HP METRIC MALE



Carbon steel	Stainless steel	Description	WP psi	Thread F	Hose compatibility
-	HNF831	14X1.5 M-HP MET F/E 3/16	45000	M14X1,5 LH	2061, 2161
-	HNI831	14X1.5 M-HP MET I/H 3/16	58000	M14X1,5 LH	2261, 2081
-	HNF832	14X1.5 M-HP MET F 1/4	46400	M14X1,5 LH	2162
-	HNF833	14X1.5 M-HP MET F/E 5/16	40000	M14X1,5 LH	2063, 2163, 2363
-	HNI833	14X1.5 M-HP MET I/H 5/16	55100	M14X1,5 LH	2263, 2083
-	HNF855	18X1.5 M-HP MET F/E 1/2	30000	M18x1,5 LH	2065, 2165
-	HNI855	18X1.5 M-HP MET I/H 1/2	43000	M18x1,5 LH	2265, 2085

## HG HP FEMALE



Carbon steel	Stainless steel	Description	WP psi	Thread F	Hose compatibility
-	HGF8B1	9/16 F-HP F/E 3/16	45000	9/16-18 UNF	2061, 2161
-	HGI8B1	9/16 F-HP I/H 3/16	58000	9/16-18 UNF	2261, 2081

## HJ GAS MALE



Carbon steel	Stainless steel	Description	WP psi	Thread F	Hose compatibility
HJB100	-	1/8 M-GAS B/A 5/32	22000	1/8-28 GAS	2020, 2030
HJB120	-	1/4 M-GAS B/A 5/32	22000	1/4-19 GAS	2020, 2030
HJA101	-	1/8 M-GAS A 3/16	22000	1/8-28 GAS	2021
HJA121	-	1/4 M-GAS A 3/16	22000	1/4-19 GAS	2021
HJC123	-	1/4 M-GAS C/B 5/16	22000	1/4-19 GAS	2033, 2043

## HK METRIC MALE



Carbon steel	Stainless steel	Description	WP psi	Thread F	Hose compatibility
HKA1KG	-	6x1 M-MET A 1/8	20000	M6X1	2028
HKB10	-	7X1 M-MET B/A 5/32	22000	M7X1	2020, 2030
HKB1J0	-	8X1.25 M-MET B/A 5/32	22000	M8x1.25	2020, 2030
HKB110	-	10X1 M-MET B/A 5/32	22000	M10X1	2020, 2030
HKA111	-	7X1 M-MET A 3/16	22000	M7X1	2021
HKA111	-	10X1 M-MET A 3/16	22000	M10X1	2021

## HQ GAS100° MALE EXTERNALE CONE



Carbon steel	Stainless steel	Description	WP psi	Thread F	Hose compatibility
HQB120	-	1/4 M-GAS100 EC B/A 5/32	22000	1/4-19 GAS	2020, 2030
HQC121	-	1/4 M-GAS100 EC C 3/16	26100	1/4-19 GAS	2041, 2241
HQF121	-	1/4 M-GAS100 EC F/E 3/16	40600	1/4-19 GAS	2061, 2161
HQB122	-	1/4 M-GAS100 EC B/A 1/4	22000	1/4-19 GAS	2022, 2032
HQA123	-	1/4 M-GAS100 ECA 5/16	22000	1/4-19 GAS	2023
-	HQC823	1/4 M-GAS100 EC C/B 5/16	24000	1/4-19 GAS	2033, 2043



# UHP Helix inserts

## HR USIT MALE



Carbon steel	Stainless steel	Description	WP psi	Thread F	Hose compatibility
HRB120	-	1/4 M-USIT B/A 5/32	22000	1/4-19 GAS	2020, 2030
HRC121	-	1/4 M-USIT C 3/16	26100	1/4-19 GAS	2041, 2241
HRB122	-	1/4 M-USIT B/A 1/4	22000	1/4-19 GAS	2022, 2032
HRB142	-	3/8 M-USIT B/A 1/4	22000	3/8-19 GAS	2022, 2032

## HS FLAT SEAL MALE



Carbon steel	Stainless steel	Description	WP psi	Thread F	Hose compatibility
HSB100	-	1/8 M-FS B/A 5/32	22000	1/8-28 GAS	2020, 2030
HSA101	-	1/8 M-FS A 3/16	22000	1/8-28 GAS	2021
HSB122	-	1/4 M-FS B/A 1/4	22000	1/4-19 GAS	2022, 2032
HSA123	-	1/4 M-FS A 5/16	22000	1/4-19 GAS	2023
-	HSB823	1/4 M-FS B 5/16	22000	1/4-19 GAS	2033

## HT DIN3852 MALE



Carbon steel	Stainless steel	Description	WP psi	Thread F	Hose compatibility
HTB122	-	1/4 M-DIN3852 B/A 1/4	22000	1/4-19 GAS	2022, 2032
HTA123	-	1/4 M-DIN3852 A 5/16	22000	1/4-19 GAS	2023
HTA143	-	3/8 M-DIN3852 A 5/16	22000	3/8-19 GAS	2023
HTC143	-	3/8 M-DIN3852 C/B 5/16	22000	3/8-19 GAS	2033, 2043
HTB144	-	3/8 M-DIN3852 B/A 3/8	22000	3/8-19 GAS	2024, 2034

## HU FLAT SEAL METRIC MALE



Carbon steel	Stainless steel	Description	WP psi	Thread F	Hose compatibility
HUB110	-	7X1 M-FS MET B/A 5/32	22000	M7X1	2020, 2030

## ONE PIECE AND COMPACT

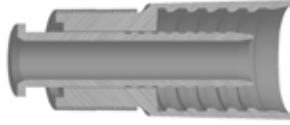
### OI NPT MALE



Carbon Steel	Stainless Steel	Description	Thread f	WP	Hose compatibility
Part no.	Part no.			psi	
OIA1QG	-	1/16" M-NPT A 1/8" 1P	1/16"-27 NPTF	22000	202B
OIA1Q0	-	1/16" M-NPT A 5/32" 1P	1/16"-27 NPTF	22000	2020
OIJ1Q0	-	1/16" M-NPT A 5/32" 1	1/16"-27 NPTF	22000	2120
OIA100	-	1/8" M-NPT A 3/16" 1P	1/8"-27 NPTF	22000	2020
OIJ100	-	1/8" M-NPT A 3/16" 1P	1/8"-27 NPTF	22000	2120
OIA101	-	1/8" M-NPT A 3/16" 1P	1/8"-27 NPTF	22000	2021
OIJ101	-	1/8" M-NPT J 3/16 1P	1/8"-27 NPTF	22000	2121
OIA122	-	1/4" M-NPT A 1/4" 1P	1/4"-18 NPTF	22000	2022
OIA123	-	5/16" M-NPT A 1/4" 1P	1/4"-18 NPTF	22000	2023

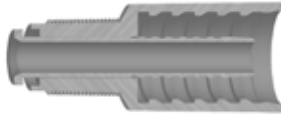
# UHP Helix inserts

## OJ GAS MALE



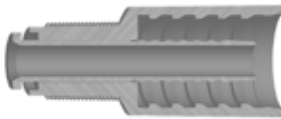
Carbon Steel	Stainless Steel	Description	Thread f	WP	Hose compatibility
Part no.	Part no.			psi	
OJA122	-	1/4 M-GASA 1/4 1P	1/4-19 GAS	22000	2022

## OS FLAT SEAL



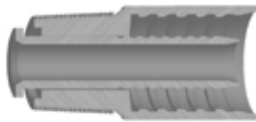
Carbon Steel	Stainless Steel	Description	Thread f	WP	Hose compatibility
Part no.	Part no.			psi	
OSA101	-	1/8 M-FS A 3/16 1P	1/8 - 28 GAS	22000	2021
OSJ101	-	1/8 M-FS J 3/16 1P	1/8 - 28 GAS	22000	2121
OSA122	-	1/4 M-FS A 1/4 1P	1/4 - 19 GAS	22000	2022

## OU FLAT SEAL METRIC



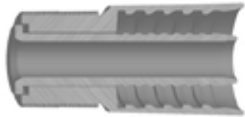
Carbon Steel	Stainless Steel	Description	Thread f	WP	Hose compatibility
Part no.	Part no.			psi	
OUA110	-	7X1 M-FS MET A 5/32 1P	M7	22000	2020
OJU110	-	7X1 M-FS MET J 5/32 1P	M7	22000	2120

## OK NPT MALE



Carbon steel	Stainless steel	Description	Thread f	WP	Hose compatibility
Part no.	Part no.			psi	
OKA1KG	-	6X1 M-NPT A 1/8" 1P	M 6X1	20000	202B

## OM HP MALE



Carbon steel	Stainless steel	Description	Thread f	WP	Hose compatibility
Part no.	Part no.			psi	
OMA130	-	5/16" M-HP A 5/32"	5/16"-24 UNF	22000	2020

## HY HP FEMALE



Carbon steel	Stainless steel	Description	Thread f	WP	Hose compatibility
Part no.	Part no.			psi	
-	HYK841	3/8" F-HP RH K 3/16"	3/8"-24 UNF RH	26100	2041
-	HYK842	3/8" F-HP RH K 1/4"	3/8"-24 UNF RH	22000	2042

## HM HP MALE



Carbon steel	Stainless steel	Description	Thread f	WP	Hose compatibility
Part no.	Part no.			psi	
-	HMK821	1/4" M-HP C 3/16"	1/4-28 UNF LH	26100	2041
-	HMK841	3/8" M-HP C 3/16"	3/8-28 UNF LH	26100	2041

## HG HP FEMALE



Carbon steel	Stainless steel	Description	Thread f	WP	Hose compatibility
Part no.	Part no.			psi	
-	HGK821	1/4" F-HP K 3/16	1/4-28 UNF LH	26100	2041

## UHP Helix accessories

---

**SXD** Hose Protection Jacket



**SXD** Protection Jacket Extra



**SRM** Bend Restrictor



**SXF** Stainless Steel Ring



**SXE** Hose Arrestor



**SXE1** Hose Arrestor LL



**SXG** Stainless Steel Catch Ring



**SXH** Gland Nut



**SXH** Collar



## **TRANSFER OIL is today one of the most representative manufacturing players in the high pressure thermoplastic hose industry.**

The company was founded in 1979 not far from the city of Parma, in Italy, the Unesco creative city of Gastronomy. Since its beginning, Transfer Oil produced reinforced thermoplastic hoses manufactured from the finest raw materials sourced from leading suppliers of premium engineering polymers and fibers. Transfer Oil products are the choice of the most significant distributors in our industry as well as renowned OEMs that can take great advantage of Transfer Oil direct product design capability, in house hose analysis and qualification.

With applications ranging from hydraulic systems, gas and fluid handling up to refrigeration and air conditioning, Transfer Oil products are used in several different industries.

Being qualified to assemble and proof test Ultra High Pressure products up to 6.000 bar / 90.000 psi, Transfer Oil is today the only independent hose manufacturer capable to offer to the market products covering virtually every pressure range that a thermoplastic hose can reach with the technology known today.

With a distinctive dedication for high technology, Transfer Oil products are manufactured in state

of the art facilities where health and safety, environment and quality are taken to the highest level. In our newest manufacturing facility the energy produced through the solar panels installed on its roof is enough to cover about one fifth of the entire plant annual energy consumption. Furthermore, thanks to an uncommon floor heating system – made of over 40 thousands meters of tubes integrated in the concrete floor – we can grant unmatched comfort for our people and, since no ventilation is required, we dramatically limited dust particles circulation resulting in a healthier environment and higher quality products.

Health & Safety is the first and most important product in our range, and it is not a coincidence that our products are trusted parts in very critical equipment. But safety is a top priority also in our plants where, for example, we introduced product manipulators eliminating heavy lifting operations for our people, allowing them to work in a safer, effortless and more ergonomic conditions.

Care for people and for the environment, an experienced team and an unrivalled range of products.

This is Transfer Oil, in a nutshell, Pure Fluid Attitude.

### **Transfer Oil S.p.A.**

via sacca, 64  
43052 - colorno - parma - italy  
T +39 0521 3139  
[www.transferoil.com](http://www.transferoil.com)  
[info@transferoil.com](mailto:info@transferoil.com)

